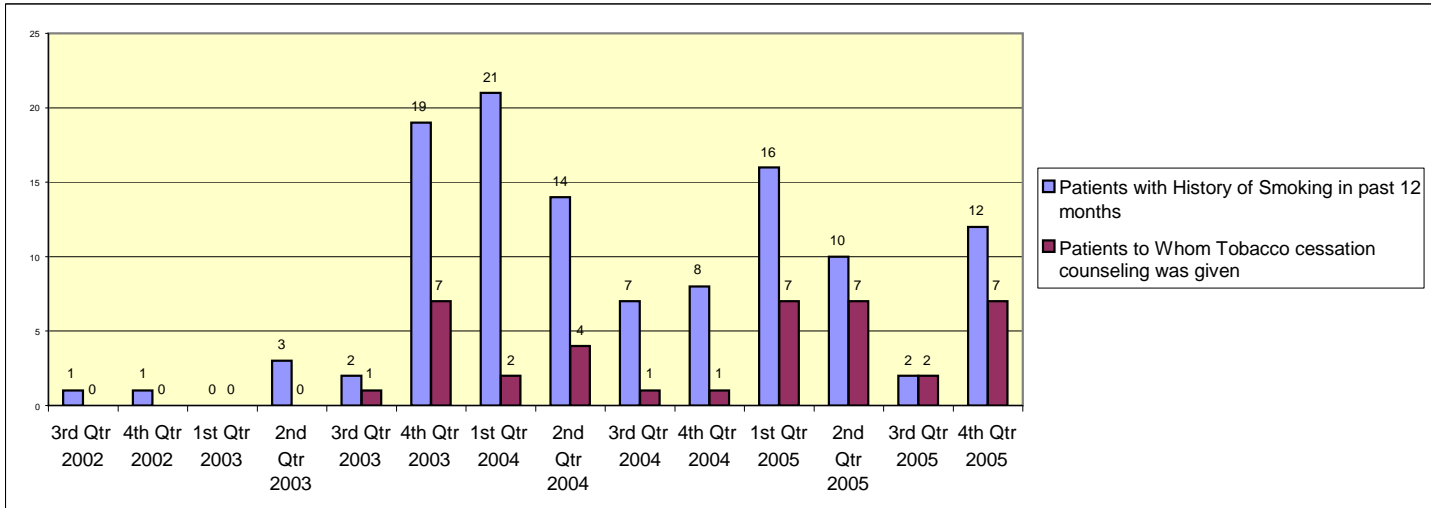
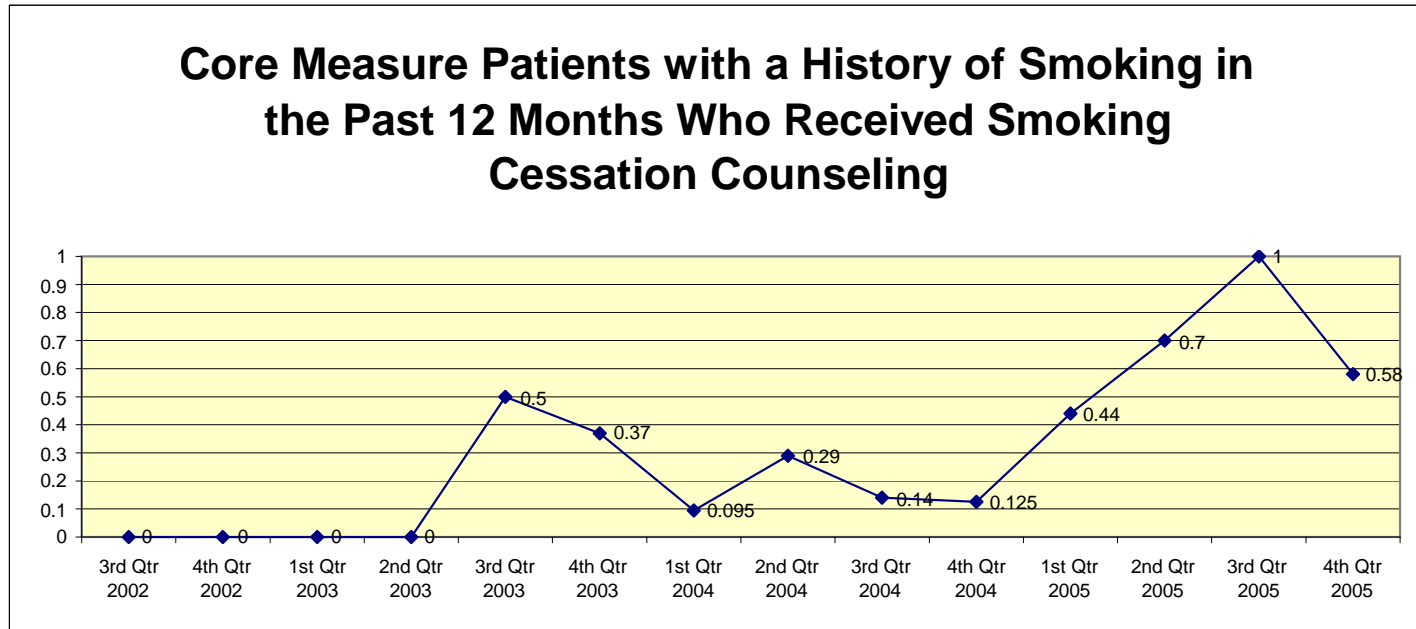


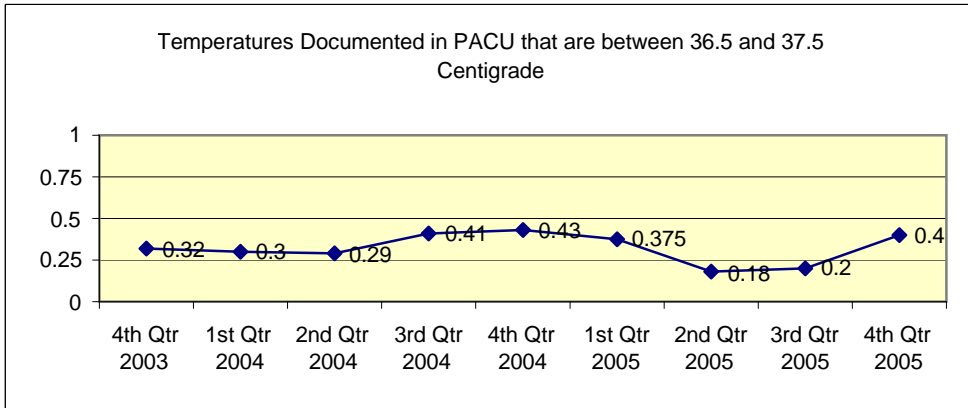
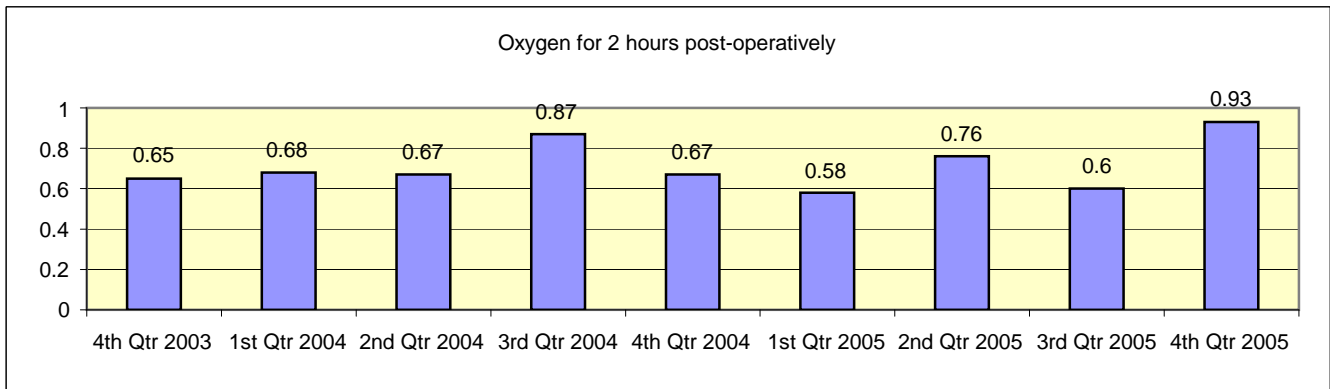
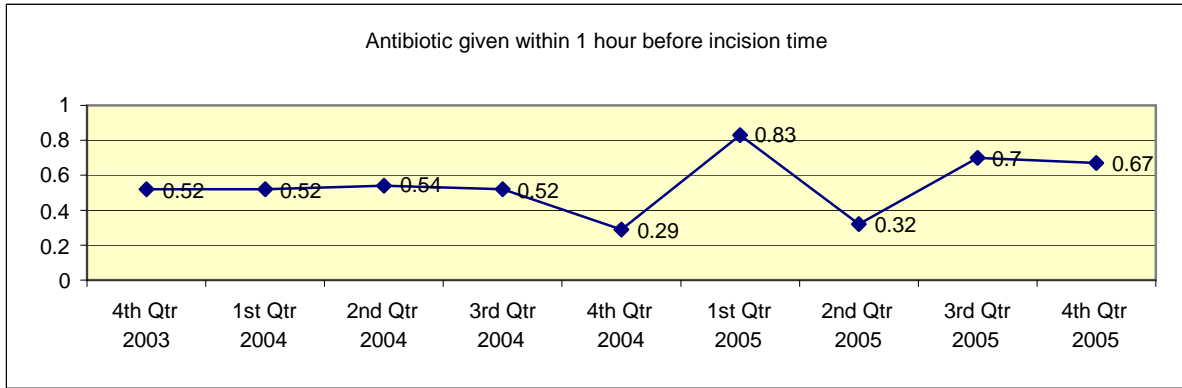
Core Measure Patients with a History of Smoking in the Past 12 Months who received Counseling



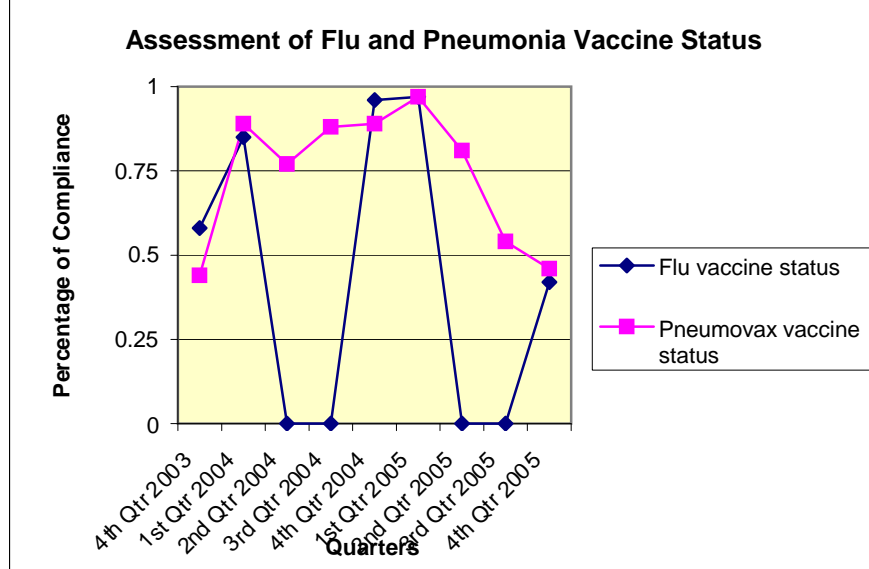
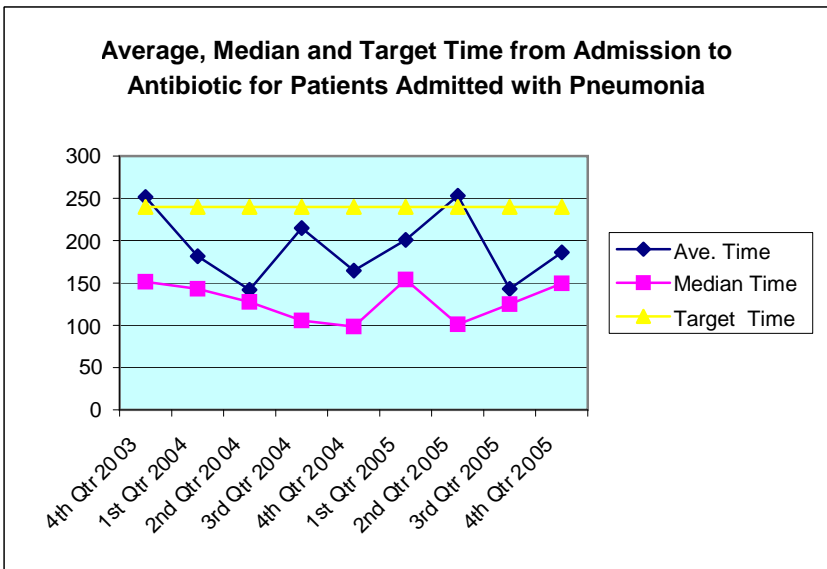
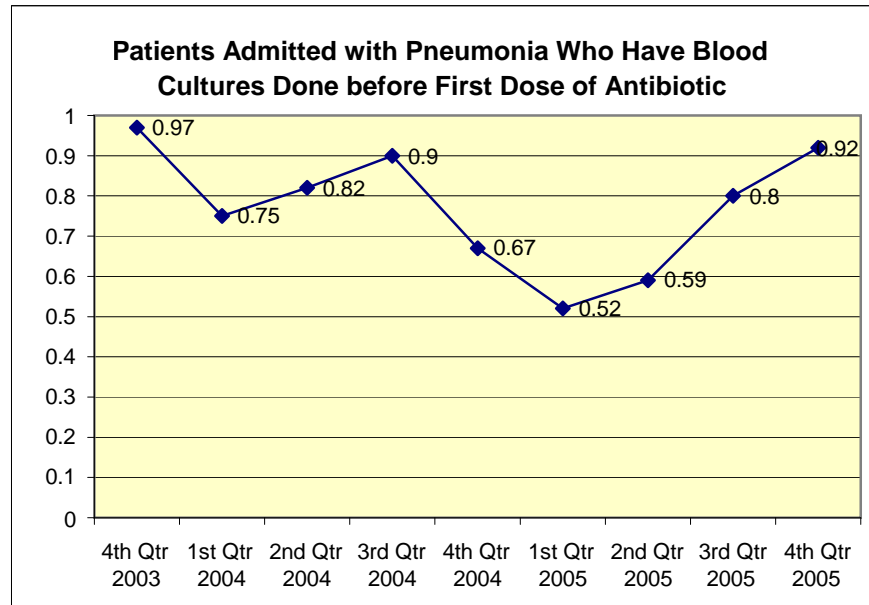
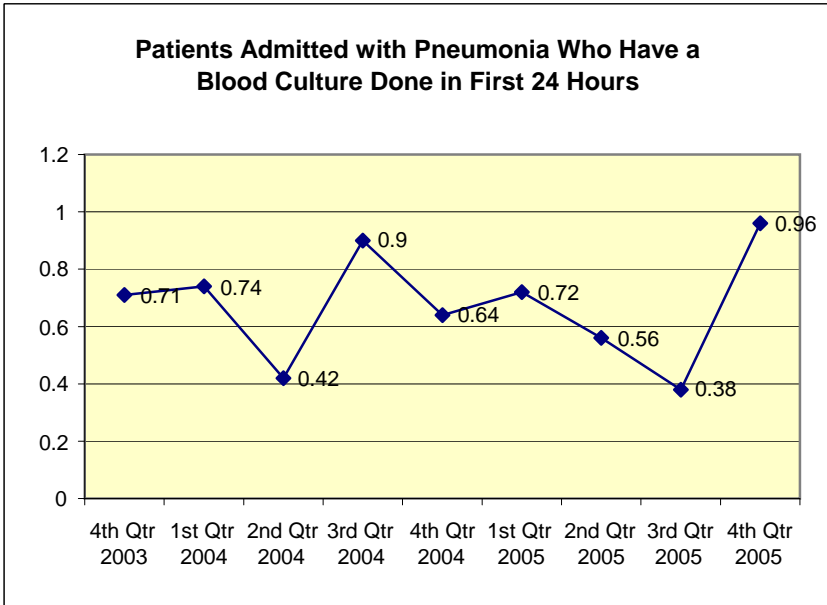
Core Measure Patients with a History of Smoking in the Past 12 Months Who Received Smoking Cessation Counseling



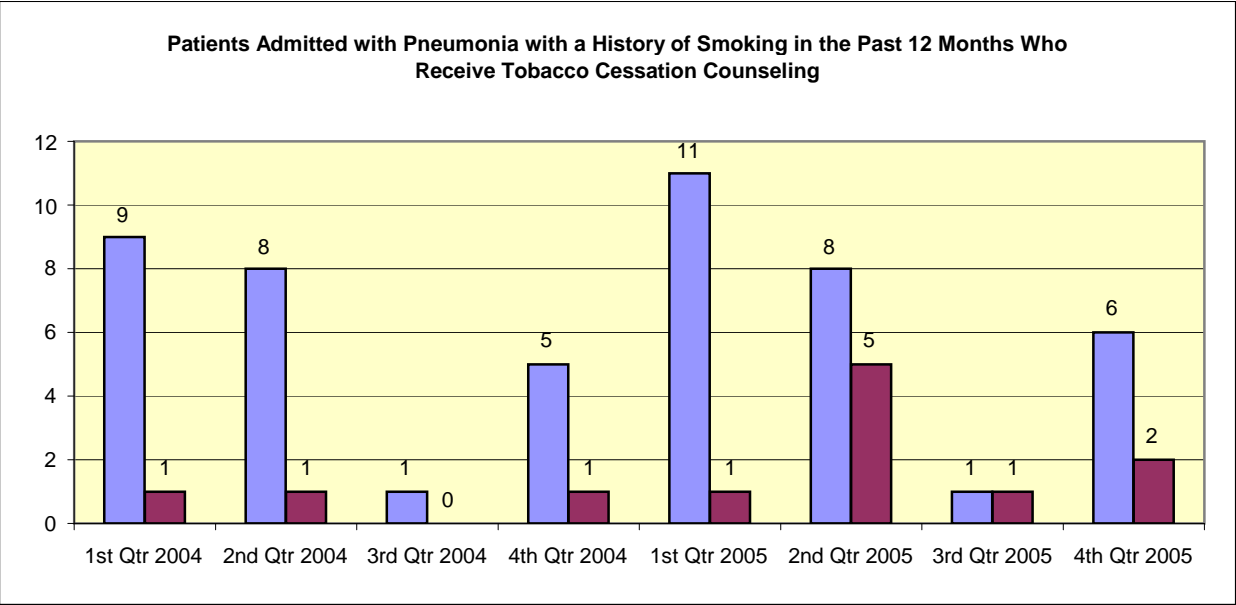
Surgical Infection Prevention



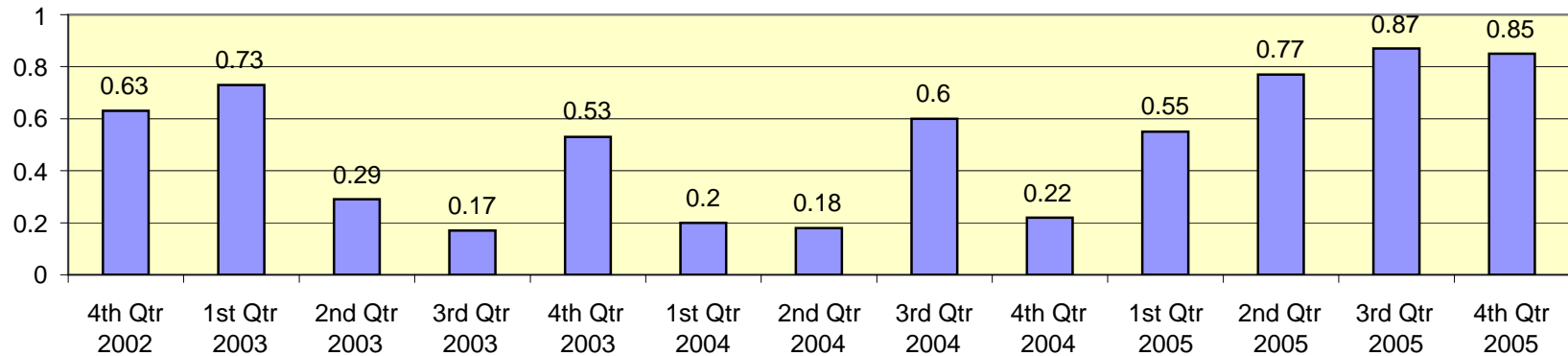
Community-Acquired Pneumonia Patients



Community-Acquired Pneumonia Patients



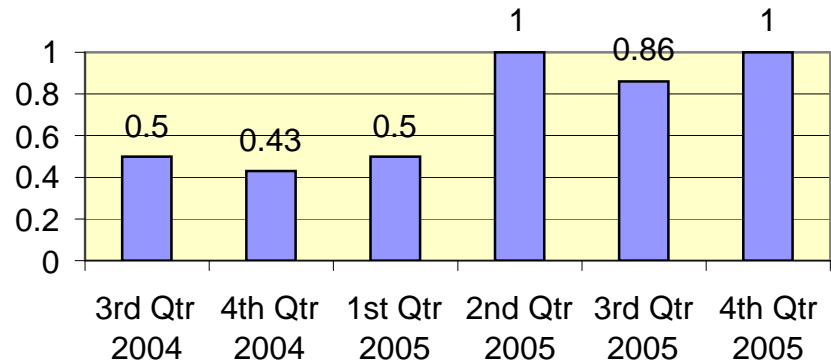
Patients Admitted with Congestive Heart Failure with a Documentation of Left Ventricular Function Assessment as a Percentage of all CHF Patients



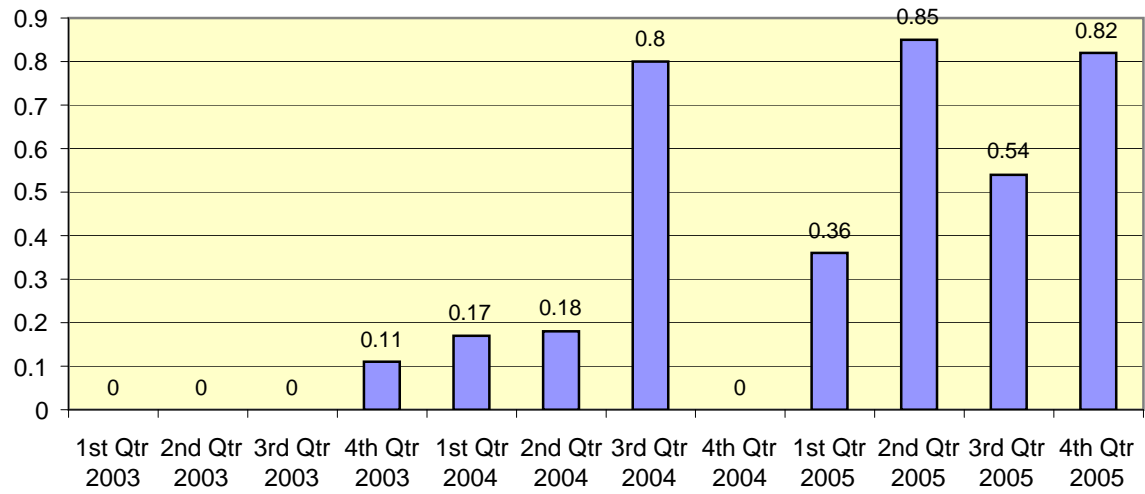
Patients Admitted with Congestive Heart Failure and Documented Left Ventricular Functon Assessment that have

Left Ventricular Systolic Dysfunction Defined as Moderate or Severe Heart Failure or a Cardiac Ejection Fraction of Less Than 45 % Who are put on Medications Specific to this Condition Unless They Are Contraindicated.

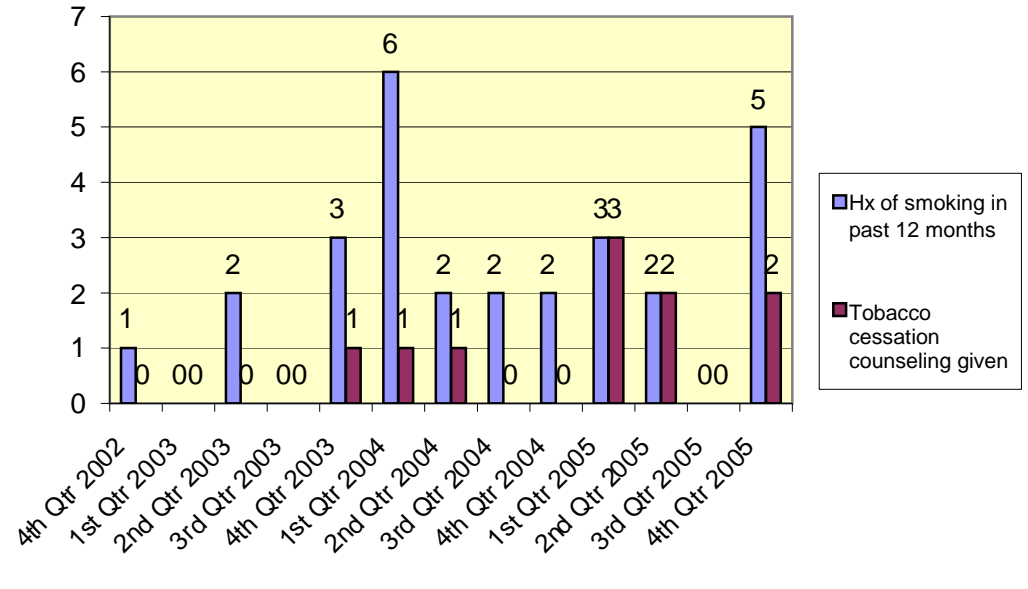
ACEI or ARB on Discharge for Patients w/known LVSD



Percentage of Patients with a Discharge Diagnosis of CHF and Discharged from GSMC with all 6 elements in Discharge Instructions



Patients with a Discharge Diagnosis of CHF with a History of Smoking in the Past 12 Months Compared to Those Receiving Tobacco Cessation Counseling



Patients Admitted with an Acute Myocardial Infarction (Heart Attack)

